

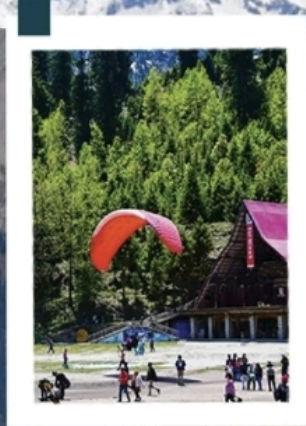
MOJILLO  
Tours & Trekking



Time to go ♡

# MANALI WITH KASOL

8 DAY & 7 NIGHT



 [mojilo\\_tours\\_and\\_trekking](#)

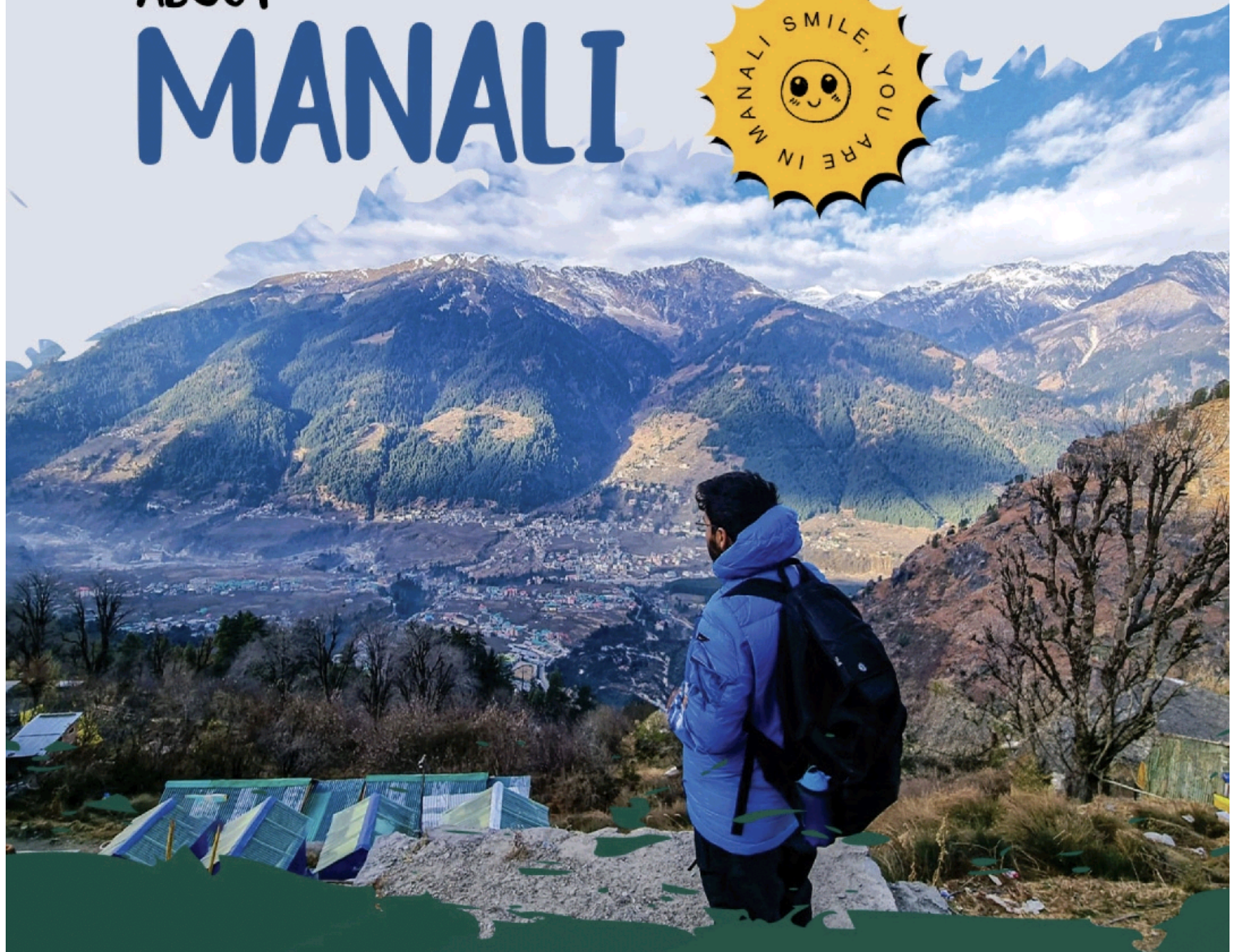
 [Mojilo Tours Trekking](#)



99 98 53 53 15



# ABOUT MANALI



*A gift of the Himalayas to the world*

---

Manali is a beautiful township nestled in the picturesque Beas River valley. It is a rustic enclave known for its cool climate and snow capped mountains, offering respite to tourists escaping the scorching heat of the plains..



# ITINERARY

## DAY 1

Departure from Ahmedabad/Gandhinagar  
by train for Pathankot

🌙 🚂 ( Over night train journey )



## DAY 2

Arrival at Pathankot around 3:30 PM and  
Free time at Pathankot.

Departure for Manali by road

🌙 🚗 ( Overnight Road journey )



## DAY 3

Reach Manali, Room allotment then free time for  
Refreshment and Breakfast.

After lunch small trek to Parsha waterfall, Dinner & Garba night

🌙 🛏 Night stay in Hotel ( Breakfast - Dinner )







## DAY 4

Day for Local sightseeing.

We will visit Hidimbadevi temple, Mall road, Old manali

And other places of manali

🌙 🚌 Night stay in Hotel ( Breakfast - Dinner )



## DAY 5

After having breakfast we'll go to visit Solang valley.

Then visit Atul tunnel

After visiting Atul tunnel we will Reach Hotel and Dinner

🌙 🚌 Night stay in Hotel (Breakfast - Dinner)





## DAY 6

A day for Kasol visit.

After having breakfast we'll go for 🚣 Rafting 🪂 Paragliding

After that we will go for Kasol sightseeing.

Visit Nature Park Kasol, Manikaran Sahib, Parvati river

Manikarn Hot Springs then Departure towards Pathankot.

🌙 🚌 Overnight Road journey (Breakfast)

## DAY 7

Arrive Pathankot and catch the train for Home town

🌙 Over night train journey

## DAY 8

We will return to Ahmedabad with new friends and a memory bank of the whole trip.



# INCLUSION

- ✓ Transportation
- ✓ Stay in Hotel/ Home stay on Sharing Basis
- ✓ Food (4 BF, 3 Dinners)
- ✓ All Taxes and Permit
- ✓ Non Ac winger/ Tempo / Bus
- ✓ Guide or Instructor
- ✓ Parsha Waterfall Trek
- ✓ Atal Tunnel
- ✓ Solang Valley
- ✓ Mall road and old Manali
- ✓ Basic First-aid support

# EXCLUDES

- ✗ Paragliding and River Rafting
- ✗ Food during Travelling & lunch
- ✗ Transportation cost for sisu
- ✗ Personal Expenses & Entry fees
- ✗ Anything not mentioned above



## THINGS TO BE CARRY

- Original Identity Proof during Railway Journey Time.
- Bank Receipt/Fee Receipt on Reporting Time.
- Clothes(Full sleeves T-shirts/Shirt, Full pants/treks,
- Half pants/Sports Shorts, Trek)
- Rucksack, Carry Bag.
- Warm cloths (Jacket, woolen cap, Muffler, Full Socks,
- Hand gloves, thermal wear).
- Raincoat/Umbrella.
- Bedding Material (Blankets) for Railway Journey.
- Trekking Shoes/ Sports Shoes and Socks.
- Cap/Hat, goggles
- Cold cream, Face wash, Brush, Toothpaste.
- Water bottles
- Mobile, camera, chargers, power banks.
- Diary &Pen, Snacks & chocolates. Personal medicines, if any.
- **Note: -Please avoid of Bringing Jogger Shoes.**

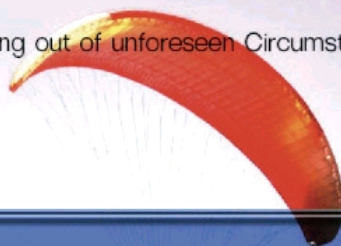




# OUR LIABILITIES & LIMITATIONS

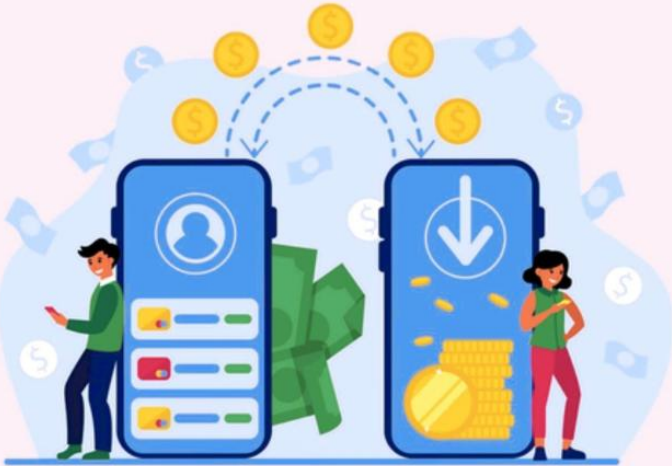


- Please note that after the end of journey, if there are any Hike in entrance fees of Monuments / museums, monastery entry fees, Taxes, fuel cost or guide charges – by Govt of India, the same would be charged as extra.
- Smoking, Tobacco, Alcohol & Drugs are strictly prohibited and if any suspect found in such case, immediate cancellation of member Participation and no further service/return ticket/refund will be paid.
- All itineraries are sample itineraries, intended to give you a general idea of the journey. Numerous factors such as weather, road conditions, the physical ability of the participants etc. may dictate itinerary changes either before the journey or while on the trek. We reserve the right to change any schedule in the interest of the journey participants' safety, comfort & general well being.
- We shall not be responsible for any loss, injury or damage to person, property, or Otherwise in connection with any accommodation transportation or other services, resulting – directly or indirectly from any act of GOD, dangers, fire, accident, breakdown in machinery or equipment, breakdown of transport, wars, Civil disturbances, strikes, riots, thefts, pilferages, epidemics, medical or custom department regulations, defaults, or any other causes beyond our control.
- We do not have any insurance policy covering the expenses for accident, sickness, loss due to theft, or any other reasons.
- If any properties of Hotel like room, tents, equipment's and etc lost/ scathe/ harm or damage by you. Its cost will be pay by you. (By your group).
- Please Note: We will not be responsible for any costs arising out of unforeseen Circumstances like landslides, road blocks, bad weather, etc.





# Payment



## PAYMENT TERMS

- ✓ 3000 INR Per Person for Sleeper train At The Time Of Registration
  - ✓ 5000 INR Per Person for 3AC train At The Time Of Registration
- Balance Payment 7 Days Before Payment

### Mojilo Tours & Trekking

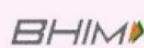


[yespay.bizsbiz75857@yesbankltd](mailto:yespay.bizsbiz75857@yesbankltd)

## BOOKING PROCESS

- ✓ Book Your Seats by depositing an advance of 50% and rest has to be paid 2 days prior the time of departure of the trip

UPI Payments Kindly Scan Code:





# ***CANCELLATION POLICY***

- Advance Payment **Non Refundable**, neither **transferable** nor **exchangeable**.
- Kindly book your package after discussing with your friends or families who are gonna join the trip with you. Once a recipient generated cancellation will be according to our **cancellation policy**.
- You have booked your whole package with us, so kindly do not send us calculation of Train tickets, hotels & vehicles. As per the Terms we are not reliable to refund your advance amount.
- No refund will be made for any unused accommodation, missed meals, transportation segments, sightseeing or any other service, such unused items are neither refundable nor exchangeable.

# ***TERMS & CONDITIONS***

- This is not a camp, It's a adventure tour. Facilities of the trip will be basic as per Itinerary.
- All the facilities, schedule / amenities and services mentioned above or any unpredicted situations like Govt. restrictions for COVID-19 situation/ vehicle strike / permit issues or others are clearly subjected to weather conditions or it may be changed or cancelled by the organization without any prior notice.
- No refund will be given in the case of participants terminates the trip at any point due to any reason.
- Discipline during the trip duration is must and all are expected to follow instructions given by the volunteer / instructor / guide. Misbehave / arguing with the volunteers / guide / instructors will be considered as disciplinary issues and speaking abusive language will be reacted strictly and may lead to cancel a participation.
- Only pure vegetarian food will be provided in whole trip.
- No one participant is allowed to leave the trip for any reason without permission of the camp manager.
- No Person / **Mojilo Tours & Trekking** will be not responsible for any loss of the luggage or valuables carried by the participants
- If any damage will occur by the client in tent or vehicle, recover charges have to pay by the client only. Company will not involve in damage and loss.
- Other Terms & conditions are mentioned in **Mojilo Tours & Trekking**.



MOJILLO  
Tours & Trekking

# Our Packages

PACKAGE Per Person	4-5 Sharing room	3 Sharing room	2 Sharing room
Ahmedabad/Gandhinagar Non AC train	8,999/- pp	9,999/- pp	11,499/- pp
Ahmedabad/Gandhinagar AC train	11,499/- pp	12,499/- pp	13,499/- pp
Pathankot (6 Days)	7,999/- pp	8,999/- pp	10,499/- pp



 @MOJILLO TOURS\_AND\_TREKKING

 Mojilo Tours Trekking



Office No.14, Ocean Park, 1st Floor, Nr.Nehrunagar,  
Ambawadi, Ahmedabad.



99 98 53 53 15